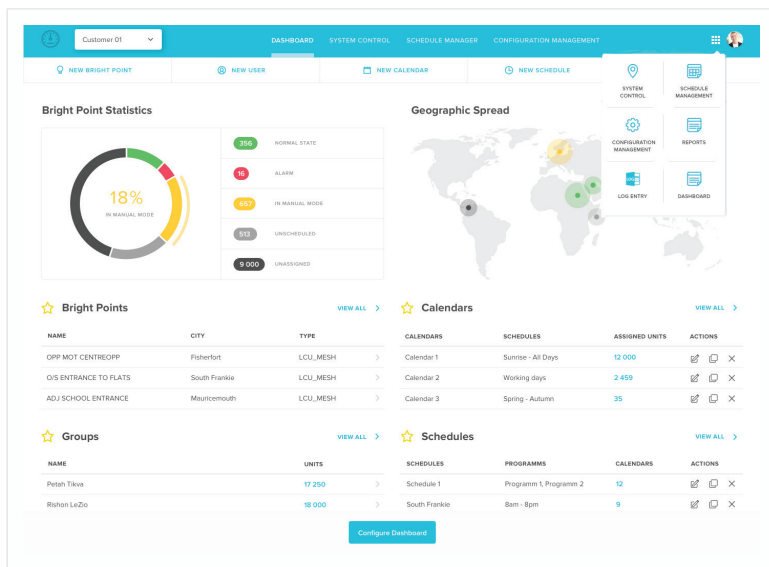


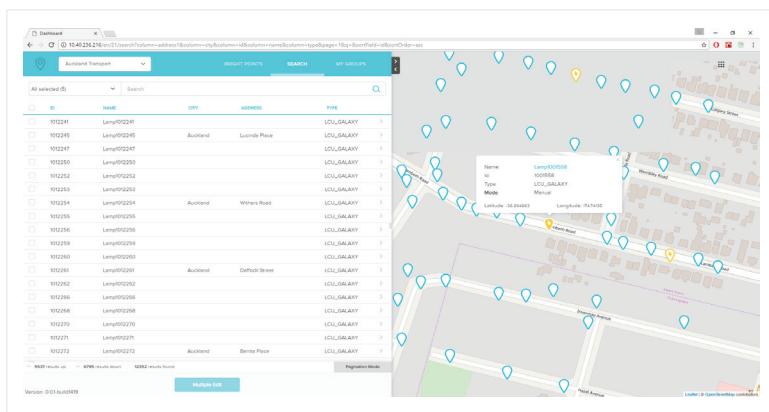
BrightCity Central Management Software

T-Light is Telematics Wireless's solution for smart lighting control and monitoring systems. It enables utilities or maintenance companies to benefit from an improved, reliable and cost-effective tool for controlling and managing street lights.

BrightCity, the Central Management Software (CMS) is a powerful and intuitive fully-featured management solution for smart lighting systems. It is applicable for all T-Light systems: T-Light Pro, T-Light Galaxy and T-Light LoRa.



Dashboard

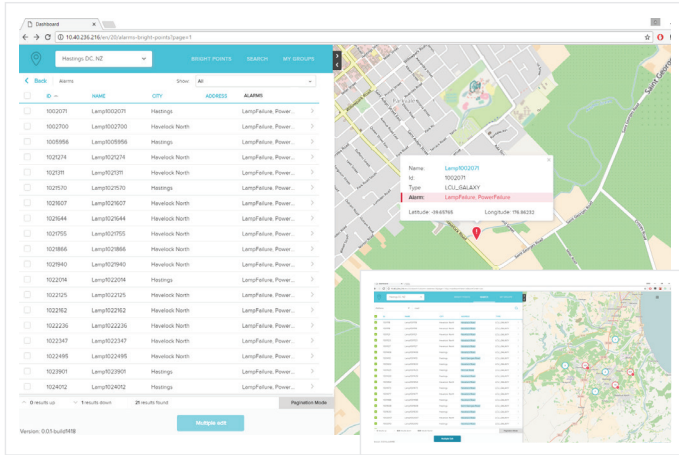


Luminaire LCU map view (manual mode)

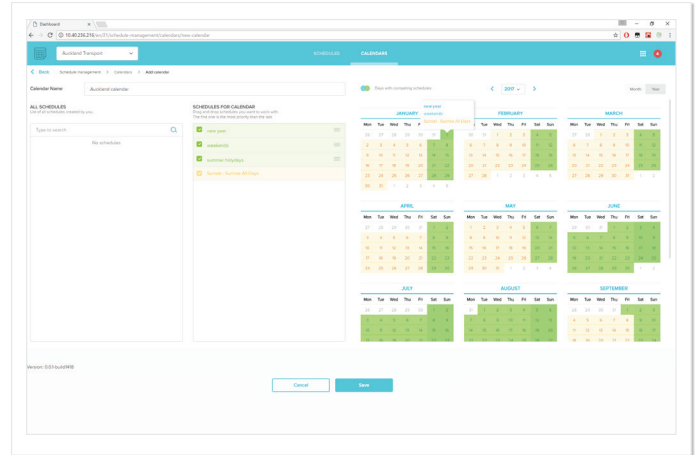
Key Features

- A powerful web-based server application
- Controls and monitors luminaires remotely
- Efficiently manages assets over large geographic areas
- Configurable ON/OFF/dimming control via user-friendly scheduling app for individual and group of lights
- Dynamic map display of each luminaire and its parameters, including optional overall power consumption
- Encrypted data management system for collecting, saving, and presenting current and historical information
- Real-time individual and group broadcast Control – segments, junctions, neighborhoods, and more
- Real-time alarms - delivered immediately
- Advanced configurable reporting mechanism
- Warns when devices approach the end of their life cycle
- Energy-saving analysis
- Detailed failure analysis reports
- Secure system access and user management
- Full logging of all user actions
- Flexible creation of device groups
- Loads tens of thousands of units per page in less than a second

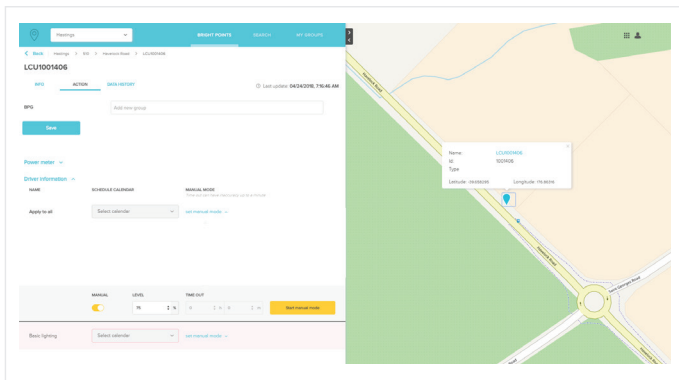
BrightCity Central Management Software



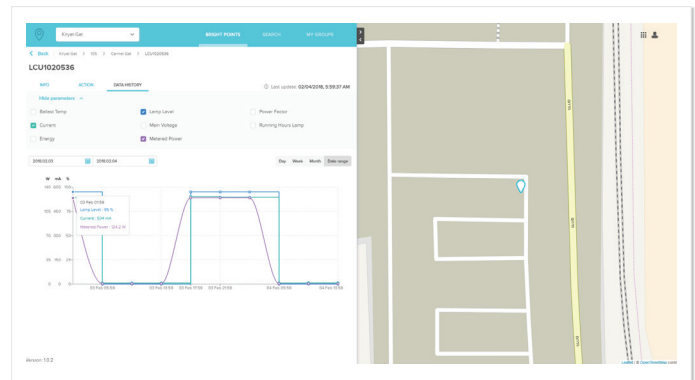
Failure Tracking



Scheduling Manager



Real-time Control



LCU data history

Company Overview

Telematics Wireless is a recognized global leader in the delivery of robust, reliable and advanced energy and water resource management systems based on RF wireless networks. With almost 20 years of experience in Machine-to-Machine (M2M) technologies, our solutions support a wide spectrum of smart city applications, increasing their efficiency, reliability, and cost-effectiveness. Telematics Wireless has delivered and installed over 15 million cutting-edge wireless devices and water systems for Automatic Meter Readings (AMR), Advanced Metering Infrastructure (AMI), energy resource management, smart grid, street and outdoor lighting control systems, location-based services, asset tracking and monitoring, and electronic toll collection. Telematics Wireless is a fully owned subsidiary of ST Electronics (Info-Comm Systems) Pte. Ltd.

T-Light™ is a trademark of Telematics Wireless. Other company and product names mentioned in this document may be trademarks or registered trademarks of their respective owners. Telematics Wireless reserves the right to make changes to the materials and products mentioned in this document without prior notice. * Specifications subject to change without prior notice